



**Type of *Eritrichium spathulatum* Phil. [family
BORAGINACEAE]**

<http://plants.jstor.org/stable/10.5555/al.ap.specimen.sgo000004135>

JSTOR

<http://plants.jstor.org>

Your use of JSTOR indicates your acceptance of the Terms & Conditions of Use, available at <http://www.jstor.org/page/info/about/policies/terms.jsp>

JSTOR is a not-for-profit service that helps scholars, researchers, and students discover, use, and build upon a wide range of content in a trusted digital archive. We use information technology and tools to increase productivity and facilitate new forms of scholarship. For more information about JSTOR, please contact support@jstor.org.

Type of *Eritrichium spathulatum* Phil. [family BORAGINACEAE]

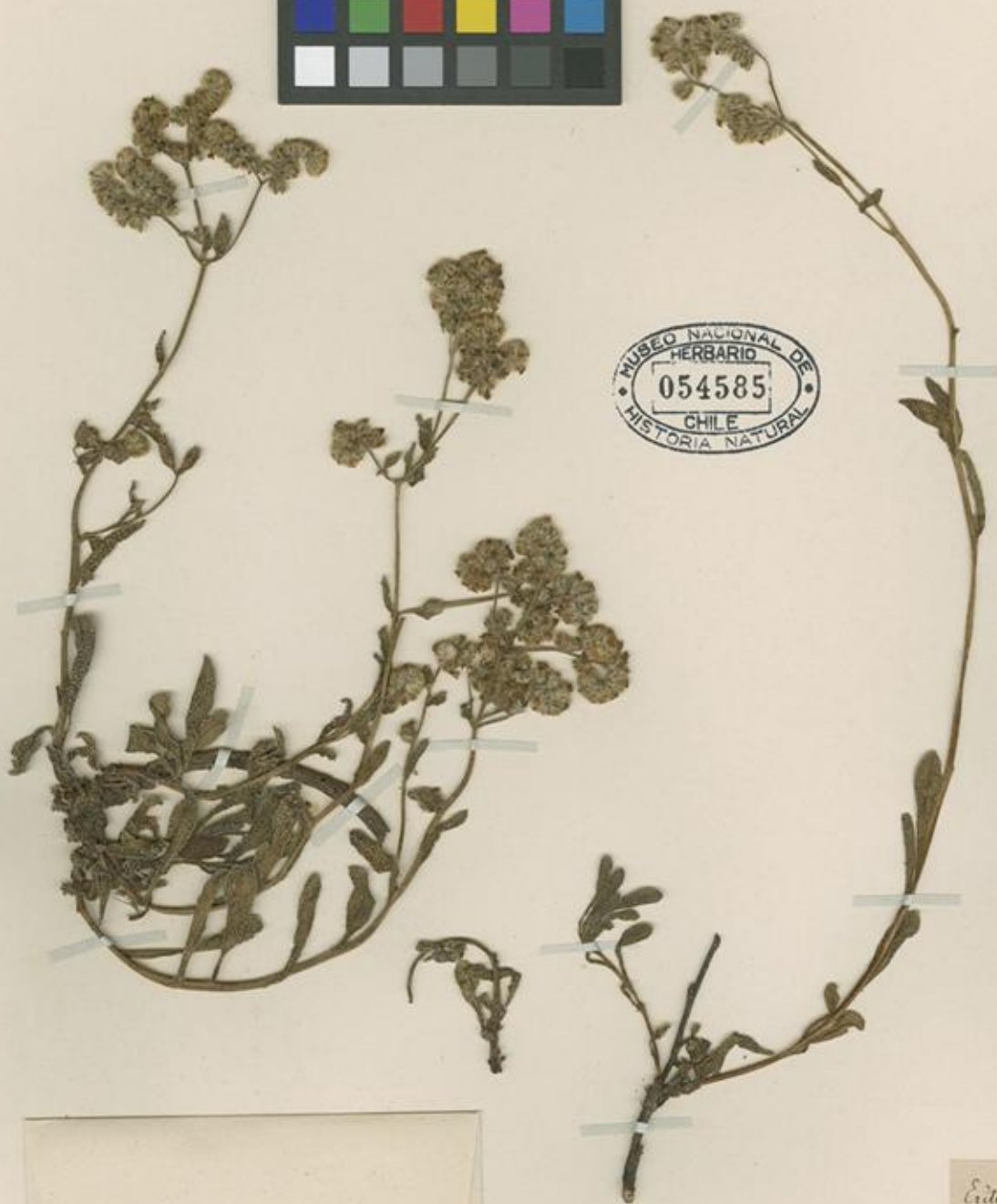
Herbarium	Museo Nacional de Historia Natural (SGO), SGO000004135
Collection	Herbarium Specimens
Resource Type	Specimens
Collector	Philippi F, #s.n.
Collection Date	1881
Locality	Cordillera de Popeta
Country	Chile (Chile)
Identifications	Type of <i>Eritrichium spathulatum</i> Phil. [family BORAGINACEAE] (stored under name); Verified by Muñoz C, 1946 <i>Cryptantha spathulata</i> (Phil.) Reiche [family BORAGINACEAE]; Verified by Muñoz M, 2009
Pages	1
Data last modified	2010-01-26

<http://plants.jstor.org/stable/10.5555/al.ap.specimen.sgo000004135>

MUSEO NACIONAL DE HISTORIA NATURAL, CHILE
SGO000004135



MUSEO NACIONAL DE
HERBARIO
054585
CHILE
HISTORIA NATURAL



Eritrichium spathulatum A.
Cordill. de Popoia 1881
S. H.

ETIQUETA DE IDENTIFICACIÓN
Cryptantha spathulata (Phil.) Reichle
Det. M. Muñoz S. 1X.2009

ETIQUETA DE CORRECCIÓN.
Eritrichium spathulatum A. *Typos*
det. C. Muñoz P. 12-06

HERBARIO DEL MUSEO NACIONAL DE
HISTORIA NATURAL, CHILE.
Material montado bajo los auspicios de la Oficina del Coordinador de
Asuntos Interamericanos Ministerio de Agricultura y
Compañía Manufacturera de Papeles y Cartones

