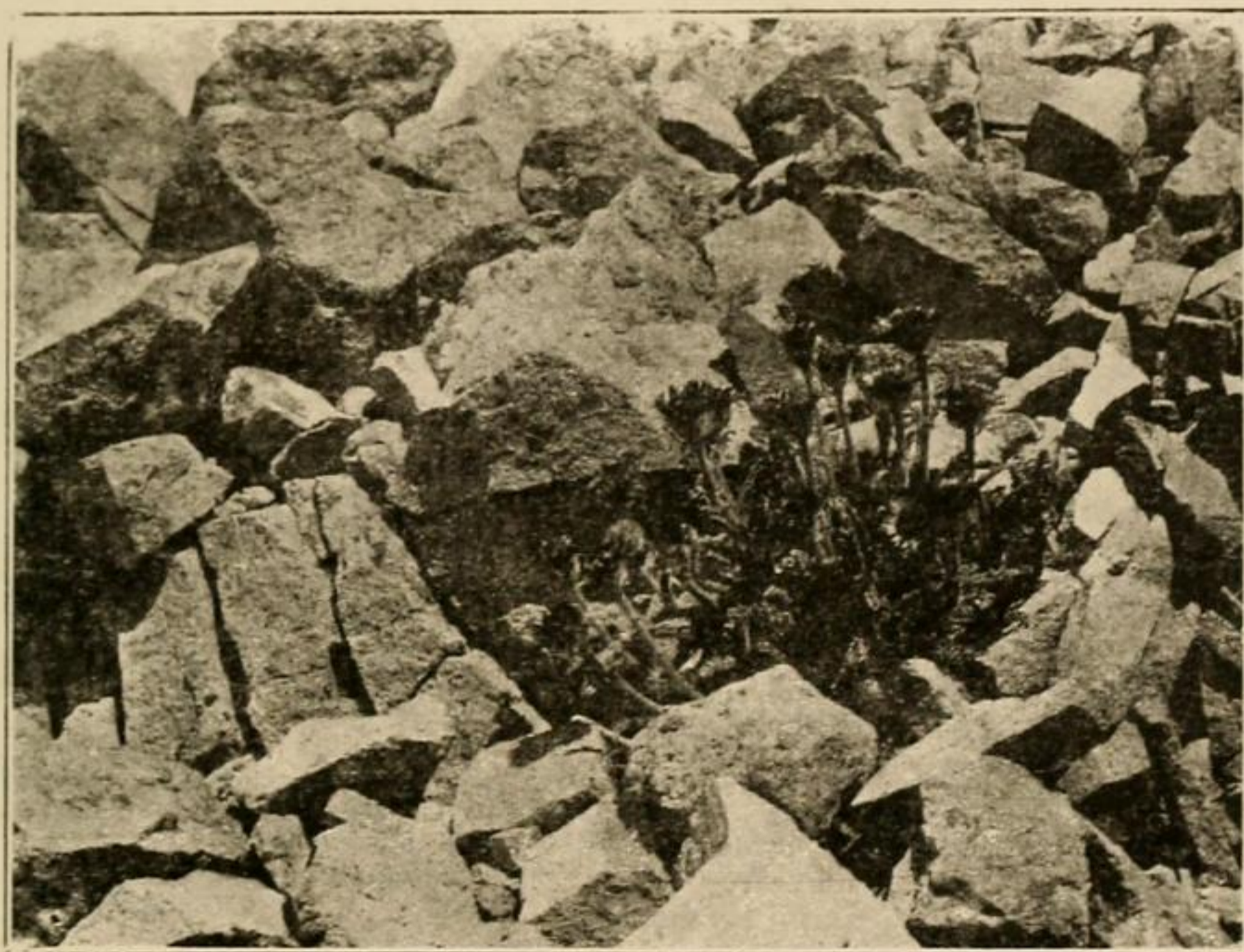


# MUHLENBERGIA

APRIL, 1912

Editors: A. A. HELLER and P. BEVERIDGE KENNEDY



*Hulsea algida* Gray

## CONTENTS:

The Monardellas of Southern California—II: L. R. Abrams	37
New Plants from Colorado: George E. Osterhout	44
Alpine Plants—VIII: P. Beveridge Kennedy:	46
New Combinations—VIII: A. A. Heller	47

University of Nevada,  
Reno, Nevada

LIBRARY  
NEW YORK  
BOTANICAL  
GARDEN

emerges a leafy bracted peduncle terminating in a single head. There are about six foliaceous bracts on each peduncle, the lowest three inches long, and the uppermost close to the head half an inch long. Differing in these points from the then available descriptions of *H. algida*, Professor Nelson and myself were led to believe our plant to be a new species, and named it *Hulsea caespitosa*.

The species was first collected by Brewer on Mt. Dana at 11500 feet, and by Bolander and Muir on the higher summits of the Sierra Nevada mountains. Rothrock is reported to have collected it on Mt. Whitney at 13700 feet.

The collection from which our photograph was taken was from the summit of Mt. Rose, Washoe county, Nevada, *Kennedy*, August 17, 1905. Other collections from the same place are by *Brown* and *Heller*. These are the only collections from Nevada that we know of at the present time.

---

## NEW COMBINATIONS—VIII.

BY A. A. HELLER

✓ **Draba ammophila**

*Draba Helleri* Small, Fl. Southeast. U. S. 479. 1903; not  
*Draba Helleriana* Greene, Pittonia 4: 17. 1899.

✓ **Dipetalia ruderalis** (Nutt.)

*Ellimia ruderalis* Nutt.; T. and G. Fl. N. A. 1: 125. 1838.  
*Oligomeris ruderalis* Nelson and Kennedy, Muhlenbergia  
3: 138. 1908.

✓ **Anisolotus argyraeus** (Greene)

*Hosackia argyraea* Greene, Bull. Cal. Acad. 1: 184. 1885.  
*Lotus argyraeus* Greene, Pittonia 2: 144. 1890.

✓ **Anisolotus grandiflorus** (Benth.)

*Hosackia grandiflora* Benth. Trans. Linn. Soc. 17: 366.  
1836.  
*Lotus grandiflorus* Greene, Pittonia 2: 145. 1890.

✓ **Anisolotus leucophaeus** (Greene)

*Lotus leucophaeus* Greene, Pittonia **2**: 145. 1890.

*Hosackia grandiflora* var.? *anthylodes* Gray, Proc. Phila. Acad. **1863**: 350. 1863.

✓ **Anisolotus macranthus** (Greene)

*Hosackia macrantha* Greene, Bull. Cal. Acad. **1**: 81. 1885.

*Lotus macranthus* Greene, Pittonia **2**: 146. 1890.

✓ **Anisolotus maritimus** (Nutt.)

*Hosackia maritima* Nutt.; T. and G. Fl. N. A. **1**: 326. 1838.

*Lotus salsuginosus* Greene, Pittonia **2**: 140. 1890.

✓ **Chamaesyce Rafinesquii** (Greene)

*Euphorbia Rafinesquii* Greene, Pittonia **3**: 207. 1897.

*Euphorbia hirsuta* Wiegand, Bot. Gaz. **24**: 50. 1897; not *E. hirsuta* Schur. 1853, or *E. hirsuta* Kit. 1866.

*Euphorbia hypericifolia* var. *hirsuta* Torr. Fl. N. and Mid. States 331. 1826.

*Chamaesyce hirsuta* Arthur, Torreyia **11**: 260. 1912.

✓ **Cryptanthe decipiens** (Jones)

*Krynitzkia decipiens* Jones, Cont. West. Bot. **13**: 6. 1910.

This species was reported from Nevada by Jones in the publication cited above. Two other stations may now be added—*Kennedy 1838*, from Logan, Clark county, and *Heller 9632*, Rhyolite, Nye county. Both collections were made early in May, 1909. The species is evidently widely distributed in the southern part of the state.

✓ **Mohavea confertiflora** (Benth.)

*Antirrhinum confertiflorum* Benth. in DC. Prodr. **10**: 592. 1846.

*Mohavea viscida* Gray, Pac. R. R. Rep. **4**: 122. 1857.

This rare plant may now also be credited to the flora of Nevada, for it was collected in the extreme southwestern point of the state near the Colorado river in March, 1911, by Mr. W. W. Robbins, of the Colorado Agricultural College.